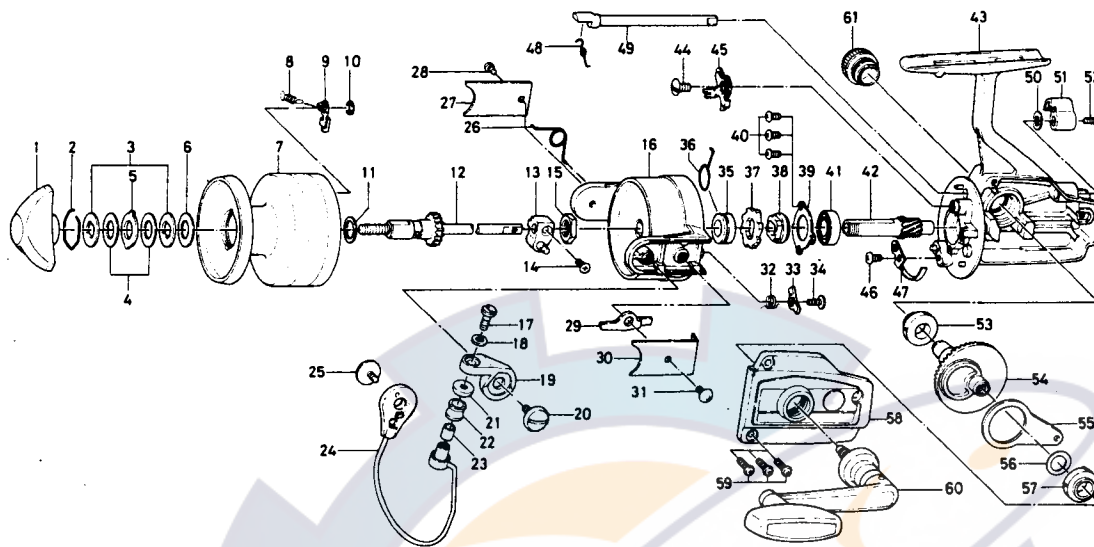


SPINNING REEL 4000X & 4000XSC



SPECIAL PARTS FOR 4000XSC:
 6-280-9702

RATCHET

| Key No. | Parts No. | Parts Name |
|---------|------------|-----------------------------|
| 1 | 6-000-8241 | Drag knob |
| 2 | 6-170-4511 | Drag washer retainer |
| 3 | 6-376-0101 | Drag D washer |
| 4 | 6-372-6504 | Disc washer |
| 5 | 6-375-5401 | Drag A washer |
| 6 | 6-372-3004 | Drag washer A |
| 7 | 6-734-7301 | Spool |
| 8 | 6-145-2101 | Spool click claw spring |
| 9 | 6-B07-8201 | Spool click claw |
| 10 | 6-320-1402 | Spool click claw retainer |
| 11 | 6-372-9601 | Spool washer |
| 12 | 6-711-5801 | Main shaft |
| 13 | 6-637-4111 | Oscillating support |
| 14 | 6-351-8901 | Oscillating slider screw |
| 15 | 6-340-8301 | Rotor nut |
| 16 | 6-202-1701 | Rotor |
| 17 | 6-363-3111 | Bail screw |
| 18 | 6-375-1101 | Bail washer |
| 19 | 6-231-3501 | Arm lever |
| 20 | 6-363-5201 | Arm lever screw |
| 21 | 6-501-2001 | Roller collar |
| 22 | 6-250-4501 | Line roller |
| 23 | 6-502-1401 | Roller metal |
| 24 | 6-725-8701 | Bail |
| 25 | 6-363-5201 | Bail holder screw |
| 26 | 6-B21-1801 | Bail spring |
| 27 | 6-B01-4001 | Bail spring cover |
| 28 | 6-352-2501 | Bail spring cover screw |
| 29 | 6-571-1201 | Bail kick lever |
| 30 | 6-041-9201 | Bail kick lever cover |
| 31 | 6-351-6101 | Bail kick lever cover screw |

Sold as one unit
 Spool assembly
 6-734-7201

| Key No. | Parts No. | Parts Name |
|---------|------------|--------------------------------|
| 32 | 6-145-3001 | Bail kick cam spring |
| 33 | 6-571-1101 | Bail kick cam |
| 34 | 6-353-8201 | Bail kick cam screw |
| 35 | 6-502-1301 | Spring holder |
| 36 | 6-145-2901 | Anti-reverse claw spring |
| 37 | 6-B10-0801 | Ratchet |
| 38 | 6-636-6711 | Click gear |
| 39 | 6-050-5101 | Ball bearing ret. washer |
| 40 | 6-351-6601 | Ball bearing ret. washer screw |
| 41 | 6-635-5001 | Ball bearing |
| 42 | 6-403-3301 | Pinion gear |
| 43 | 6-701-7103 | Body |
| 44 | 6-352-1102 | Anti-reverse claw screw |
| 45 | 6-B24-1601 | Anti-reverse claw |
| 46 | 6-351-6601 | Cam kick plate screw |
| 47 | 6-B22-9901 | Cam kick plate |
| 48 | 6-144-0321 | Anti-reverse cam spring |
| 49 | 6-B15-6402 | Anti-reverse cam |
| 50 | 6-373-2700 | Anti-reverse lever washer |
| 51 | 6-541-7301 | Anti-reverse lever |
| 52 | 6-352-2501 | Anti-reverse lever screw |
| 53 | 6-501-6101 | Bearing metal |
| 54 | 6-414-2901 | Drive gear |
| 55 | 6-481-2701 | Oscillating slider |
| 56 | 6-371-2800 | Drive gear washer |
| 57 | 6-501-6101 | Bearing metal |
| 58 | 6-707-1403 | Body cover |
| 59 | 6-351-5901 | Body cover screw |
| 60 | 6-748-1001 | Handle |
| 61 | 6-363-4701 | Handle screw cap |